

Installation

1. Download and install KWIET.

Post Installation

1. Setting proxy in secure mode (only do this if it is required.)

1.1 After installing KWIET, log off and log in as the account that will take a writing assessment.

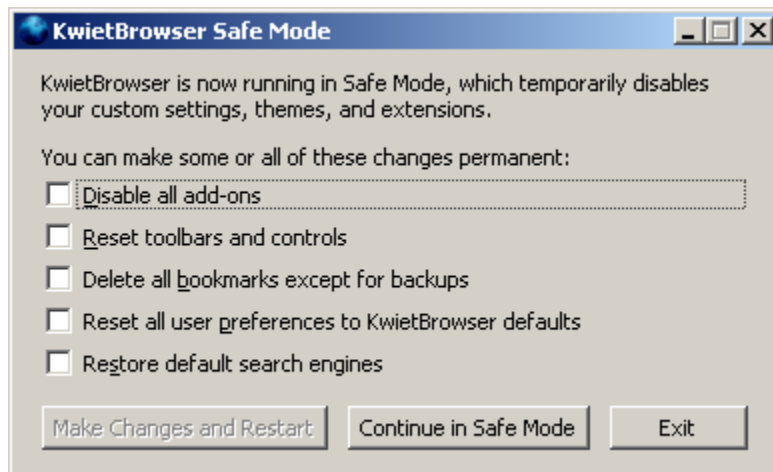
1.2 Start – Run, and type “cmd” and press “OK”. This will open command line prompt.

1.3 Go to the KWIET installed directory in command prompt.

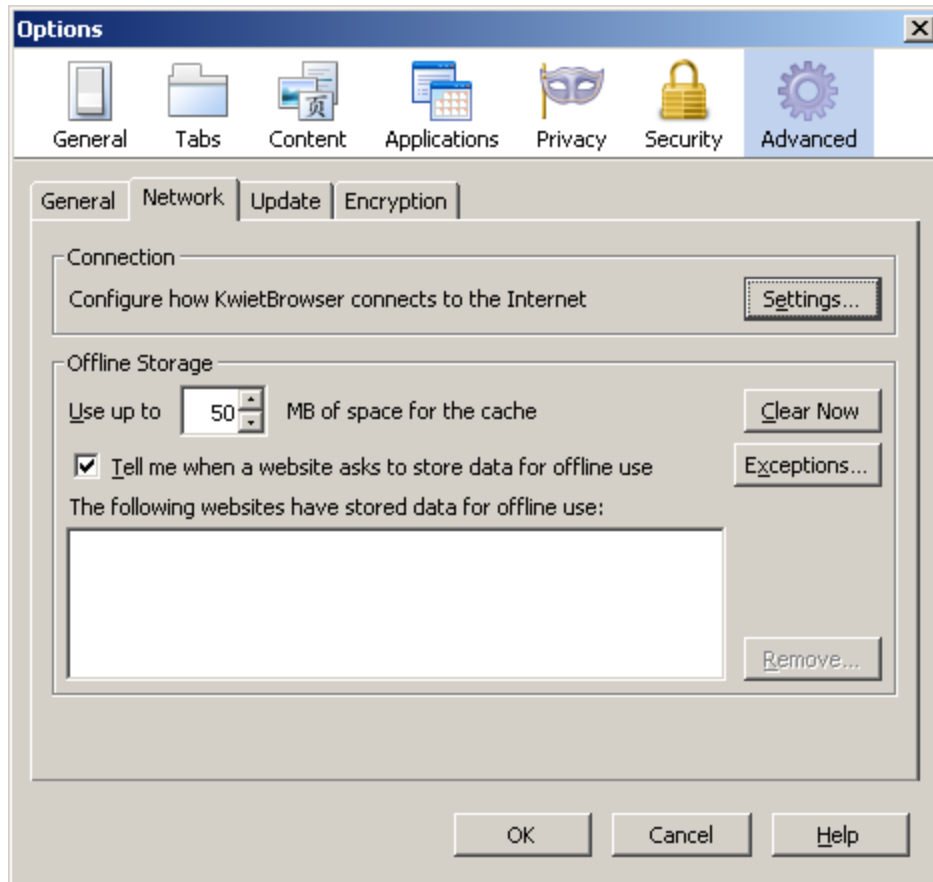
In Windows XP and Vista 32 bit, it is under C:\Program Files\KwietBrowser

In Windows 7 and Vista 64 bit, it is under C:\Program Files (x86)\KwietBrowser

1.4 Type “kwiet.exe –kwiet-config” and Enter. It will launch the dialog below. Then click “Continue in Safe Mode”



1.5 Go to Tools – Options..., and Select Advanced. And select “Network” tab, and click “Settings” on Connection area.



1.6. In Connection Settings, configure proxy settings in your network.

Connection Settings [X]

Configure Proxies to Access the Internet

No proxy

Auto-detect proxy settings for this network

Use system proxy settings

Manual proxy configuration:

HTTP Proxy: Port:

Use this proxy server for all protocols

SSL Proxy: Port:

FTP Proxy: Port:

Gopher Proxy: Port:

SOCKS Host: Port:

SOCKS v4 SOCKS v5

No Proxy for:
Example: .mozilla.org, .net.nz, 192.168.1.0/24

Automatic proxy configuration URL: